

Fir-A-Flex

Fire protection for linear
gaps in walls and ceilings

KBS Passive Fire Pty. Ltd.

Sydney Australia

Sydney Office:

PO Box 1502, Crows Nest NSW 1585

PH: 612 9969 7100

FAX: 612 9969 7200

WEB: www.KBSpassivefire.com

E-MAIL: mail@KBSpassivefire.com

KBS Passive Fire Pty. Ltd.

Vancouver Canada

Vancouver Office:

PO Box 1024, 1029 Ridgeway Ave

Coquitlam BC V3J 1S0

PH: 604 941 1001

FAX: 604 941 1029

WEB: www.KBSpassivefire.com

E-MAIL: mail@KBSpassivefire.com



General Information

KBS Fir-A-Flex is a permanently elastic fire protective sealing system for linear gaps.

KBS Fir-A-Flex can be used for all kinds of wall connection and expansion joints.

KBS Fir-A-Flex is officially tested and approved.

KBS Fir-A-Flex is a sandwich element consisting of a highly elastic KBS foam and a flexible intumescent material.

KBS Fir-A-Flex is available for fire resistance up to 240 minutes.

KBS Fir-A-Flex can be applied for gap widths over 10mm.

KBS Fir-A-Flex allows for movements of gaps up to 60%.

KBS Fir-A-Flex can be installed on one side or both sides of the gaps.

KBS Fir-A-Flex is resistant to water and various chemicals.

KBS Fir-A-Flex does not change its properties through ageing.

KBS Fir-A-Flex is physiologically harmless and odourless.

Application

Both joint faces must be dry, stable and even.

The KBS Fir-A-Flex elements are pressed together and inserted in the joint. As soon as the elements are released, they are automatically fixed. Gluing the elements on to the gap faces is not always necessary.



Inserting KBS Fir-A-Flex

Technical Information

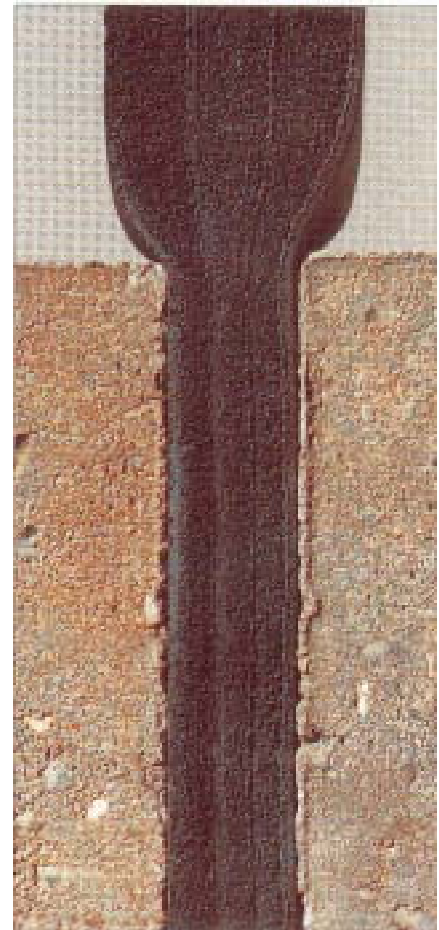
KBS Fir-A-Flex is a sandwich element consisting of KBS Foam and Antardan 706.

KBS Foam is a permanently elastic material, which in the case of fire does not melt, but rather decomposes without flames.

Antardan 706 is a highly flexible, water-resistant, intumescent material. In response to fire it generates a foam having a very low flame erosion rate.

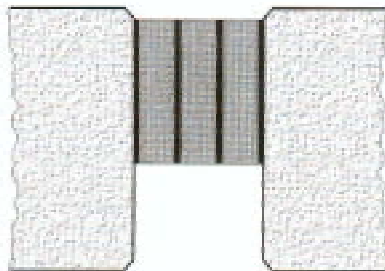
Where it is possible for water to penetrate into the gap, we generally recommend the combination of KBS Fir-A-Flex with Neocosal Coating 456 and Antardan 501 respectively to preserve the elasticity of the sandwich element (see installation recommendations below).

KBS Fir-A-Flex is supplied in element lengths of 120 cm/ piece, packed in cartons.

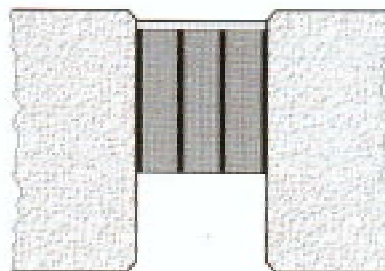


Highly elastic KBS Fir-A-Flex

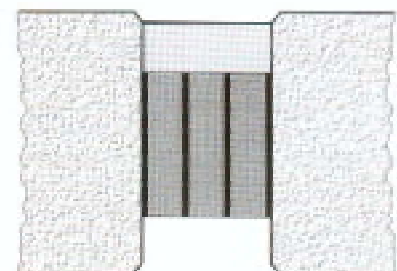
Installation Recommendations



Standard installation



Coated with Neocosal coating 456
(minimum 1mm)
to obtain splashproof tightness*



*Covered with Antardan 501**
(minimum 8mm)
to obtain higher tightness
against water and gases*

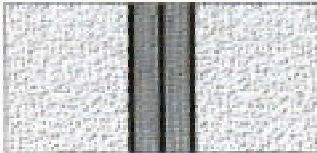
*Neocosal Coating 456 is a sprayable and brushable coating material consisting of water-based thermoplastic resins with incombustible pigments and fillers. It is supplied in plastic pails/ drums.

**Antardan 501 is a one-component silicone mastic. It is supplied in cartridges.

Joint Width

KBS Fir-A-Flex is available in 4 standard widths:

10 - 17mm



Type.../17

18 - 25mm



Type.../25

26 - 35mm



Type.../35

36 - 45mm



Type.../45

Special widths available up to 110mm upon request

Depending on fire-resistance (rating), the seal depth may vary from 20mm to 50mm (see table below)

KBS Fir-A-Flex							
For expansion joints in walls and ceilings							
F-Rating (Integrity)				T-Rating (Insulation)			
Fire resistance (min)	Installation in	Seal depth	Type / product code	Fire resistance (min)	Installation in	Seal depth	Type / product code
60	Ceiling	20	60/17 FC...45 FC	60	Ceiling	25	60/17 TC...45 TC
60	Wall	30	60/17 FW...45 FW	60	Wall	35	60/17 TW...45 TW
120	Ceiling	30	120/17 FC...45 FC	120	Ceiling	50	120/17 TC...45 TC
120	Wall	50	120/17 FW...45 FW	120	Wall	80	120/17 TW...45 TW
180	Ceiling	60	180/17 FC...45 FC	180	Ceiling	80	180/17 TC...45 TC
180	Wall	65	180/17 FW...45 FW	180	Wall	110	180/17 TW...45 TW
240	Ceiling	75	240/17 FC...45 FC	240	Ceiling	110	240/17 TC...45 TC
240	Wall	80	240/17 FW...45 FW	240	Wall	150	240/17 TW...45 TW

Installation in walls: on either side (optional)

Installation in ceilings: from above

further resistance on request

The above data, particularly the recommendations for the application and use of our products are based on our knowledge and experience. Due to different materials and conditions of application, which are beyond our control, we recommend in any case to carry out sufficient tests in order to ensure that our products are suitable for the intended processes and applications. Therefore, any liability for such recommendations or any oral advice is expressly excluded unless we have acted wilfully or by gross negligence.